



transforming the way the world works



# Trimble Access Sync og TCC

Thor Ivar Nygård, Norgeodesi AS

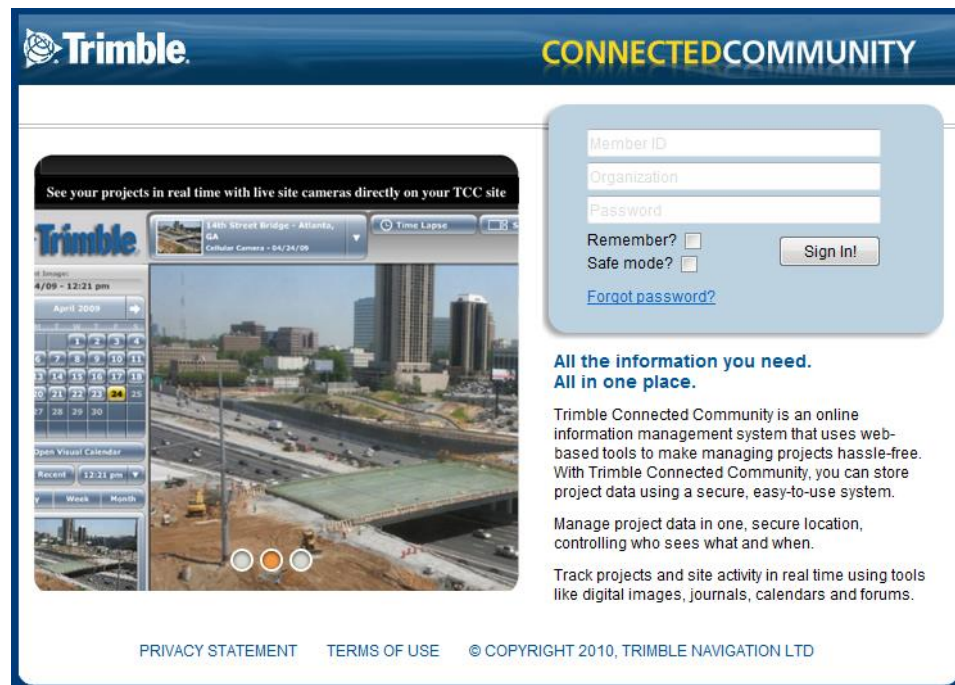
## Dataflyt og muligheter med TCC

# Tre forskjellige måter å overføre data mellom felt og kontor !

- **Bruk TCC ( Trimble Connected Community ) direkte**
- **Bruk TBC ( Trimble Business Centre ) direkte**
- **Bruk TCC Explorer (jobb i Windows utforsker miljøet, som du allerede kjenner)**

# Bruk TCC Direkte

- Første valg er å bruke TCC direkte.
- Gå til: <https://www.myconnectedsite.com>
- Gi inn:
  - Bruker ID
  - Organisasjon
  - Passord



The screenshot displays the Trimble Connected Community interface. At the top, the Trimble logo and 'CONNECTED COMMUNITY' are visible. The main content area features a live site camera feed of a construction site, with a calendar and navigation controls overlaid. To the right, a login form is present with fields for Member ID, Organization, and Password, along with checkboxes for 'Remember?' and 'Safe mode?', a 'Sign In!' button, and a 'Forgot password?' link. Below the login form, a text block states: 'All the information you need. All in one place.' followed by a description of the system's capabilities. At the bottom, there are links for 'PRIVACY STATEMENT', 'TERMS OF USE', and a copyright notice for 2010, Trimble Navigation Ltd.

**Trimble** CONNECTED COMMUNITY

See your projects in real time with live site cameras directly on your TCC site

14th Street Bridge - Atlanta, GA  
Cellular Camera - 04/24/09

Member ID  
Organization  
Password  
Remember?   
Safe mode?   
Sign In!  
[Forgot password?](#)

**All the information you need. All in one place.**

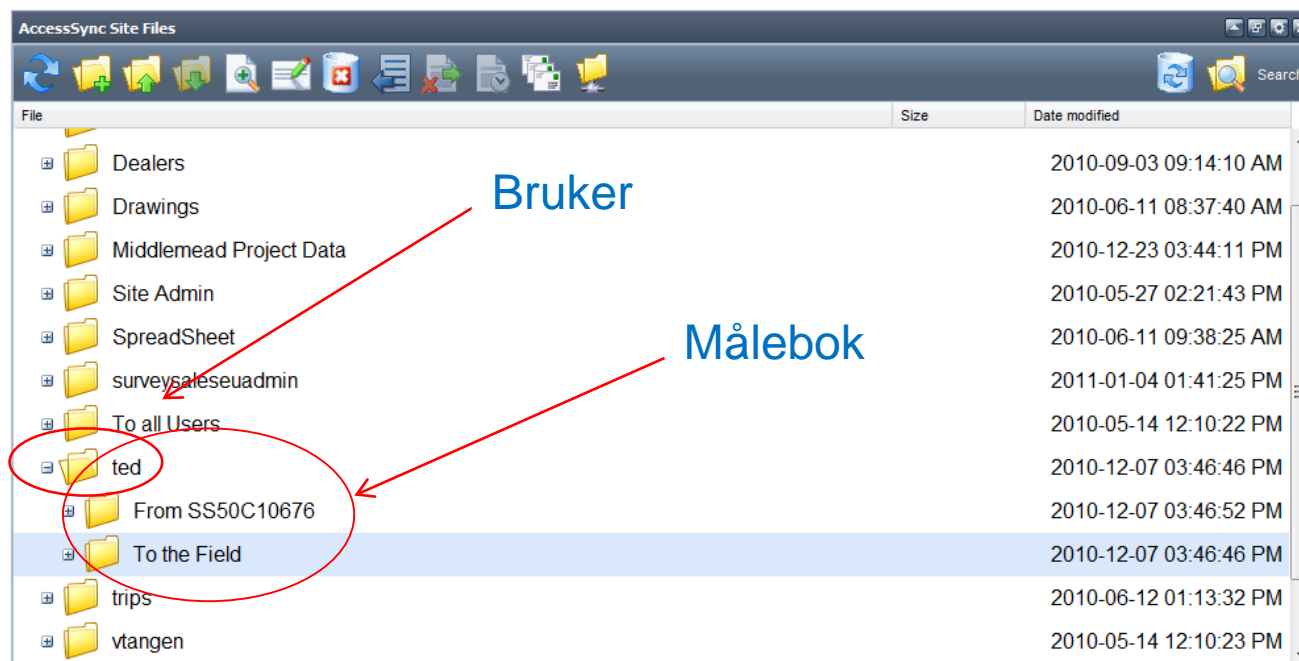
Trimble Connected Community is an online information management system that uses web-based tools to make managing projects hassle-free. With Trimble Connected Community, you can store project data using a secure, easy-to-use system.

Manage project data in one, secure location, controlling who sees what and when.

Track projects and site activity in real time using tools like digital images, journals, calendars and forums.

PRIVACY STATEMENT    TERMS OF USE    © COPYRIGHT 2010, TRIMBLE NAVIGATION LTD

# TCC Direkte

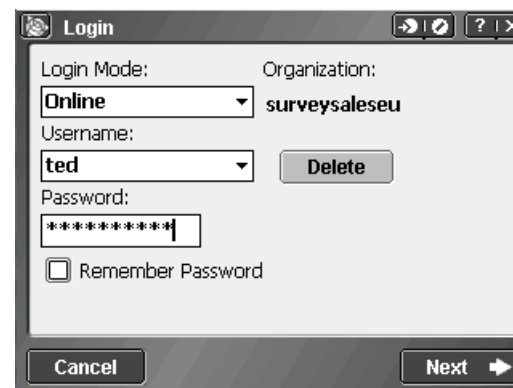
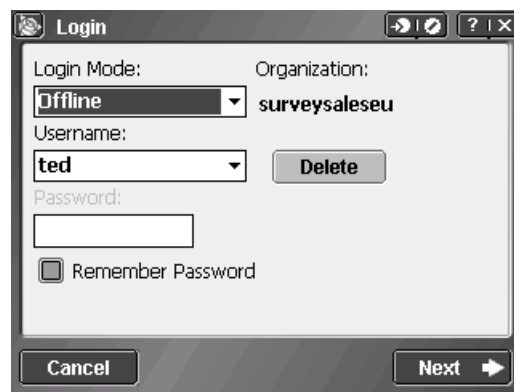


Naviger til 'file page', og finn brukeren og måleboka du vil sende data til

# TCC Direkte – i felt

Gå til Trimble ACCESS hovedmeny, og trykk på 'bruker informasjon'

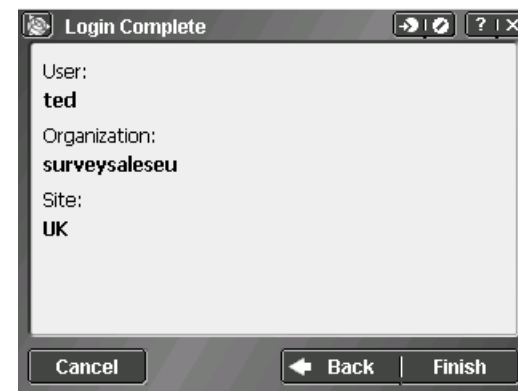
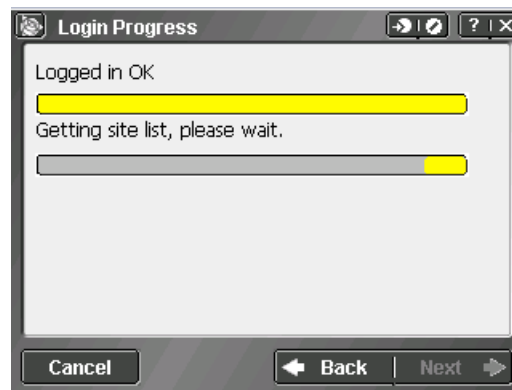
Tast inn bruker, passord o.l og press "Next"



..og når du er ferdig, velger du hvilken 'site' du vil bruke

Innloggingen startes

Avslutt innloggingen ved å klikke på "Finish"



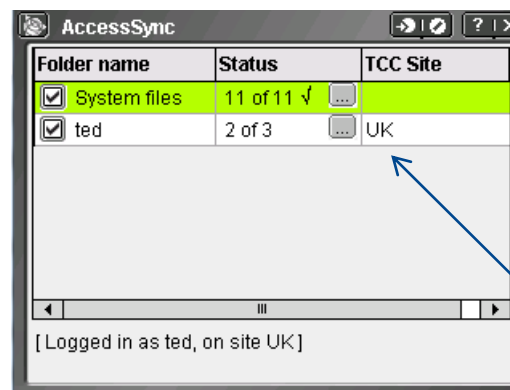
# TCC Direkte

Tilbake i hovedmenyen, trykker du på "Sync" knappen



Bruker

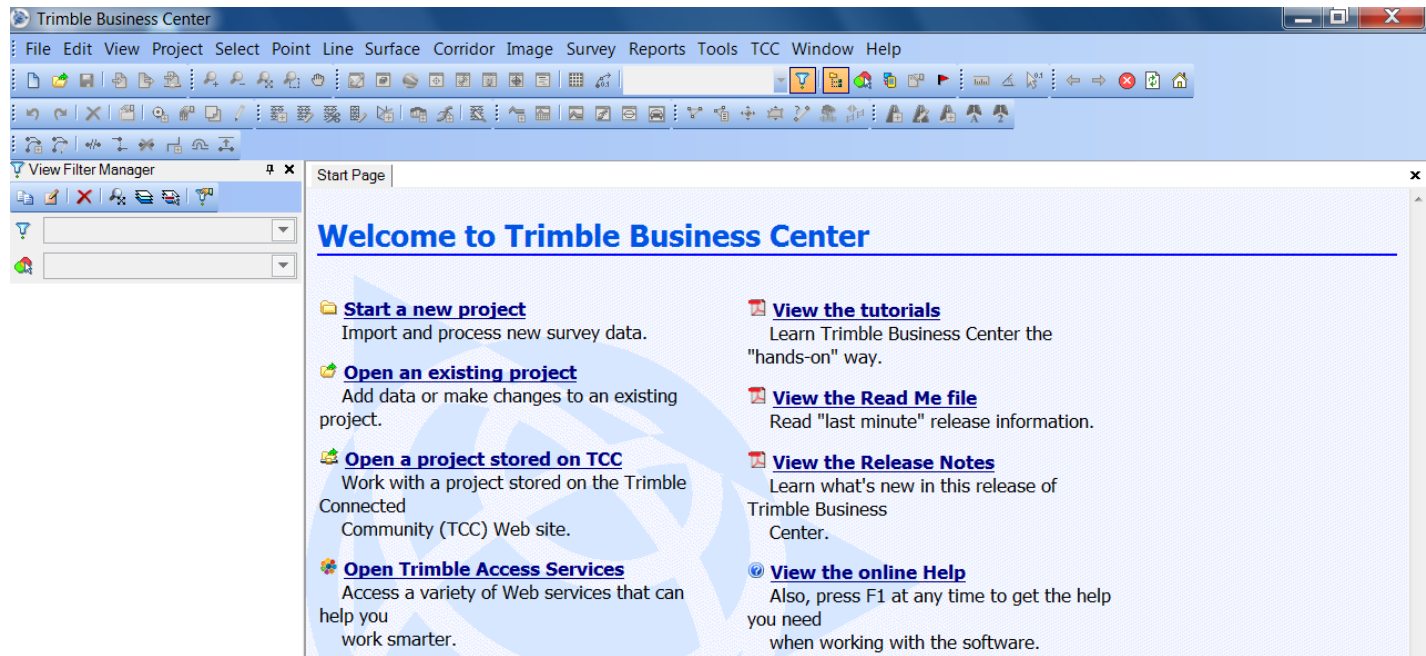
Synkroniseringen starter



'Site'n du kobler deg opp mot

# Bruk TBC

- Den andre muligheten er å bruke TBC direkte.
- Start TBC



# Bruk TBC

Start Page Trimble Access Services x

**Trimble Access Services**

Tor Erik Djupos

**Site creation**

**Registered devices**

**File upload**

**File conversion**

**GNSS forecast**

### Welcome to Trimble Access Services

The following Trimble Access Services are currently available to you.

- Site creation**  
Make new Trimble AccessSync sites to move data to and from the field
- Registered devices**  
Manage your Trimble Access devices
- File upload**  
Send files to the field via Trimble AccessSync
- File conversion**  
Convert older Trimble Access and Trimble Survey Controller Job (.job) files to newer versions
- GNSS forecast**  
View future GNSS satellite availability

Fra 'Trimble ACCESS Services', velger du riktig 'site'  
 Aktiviser 'File Upload'

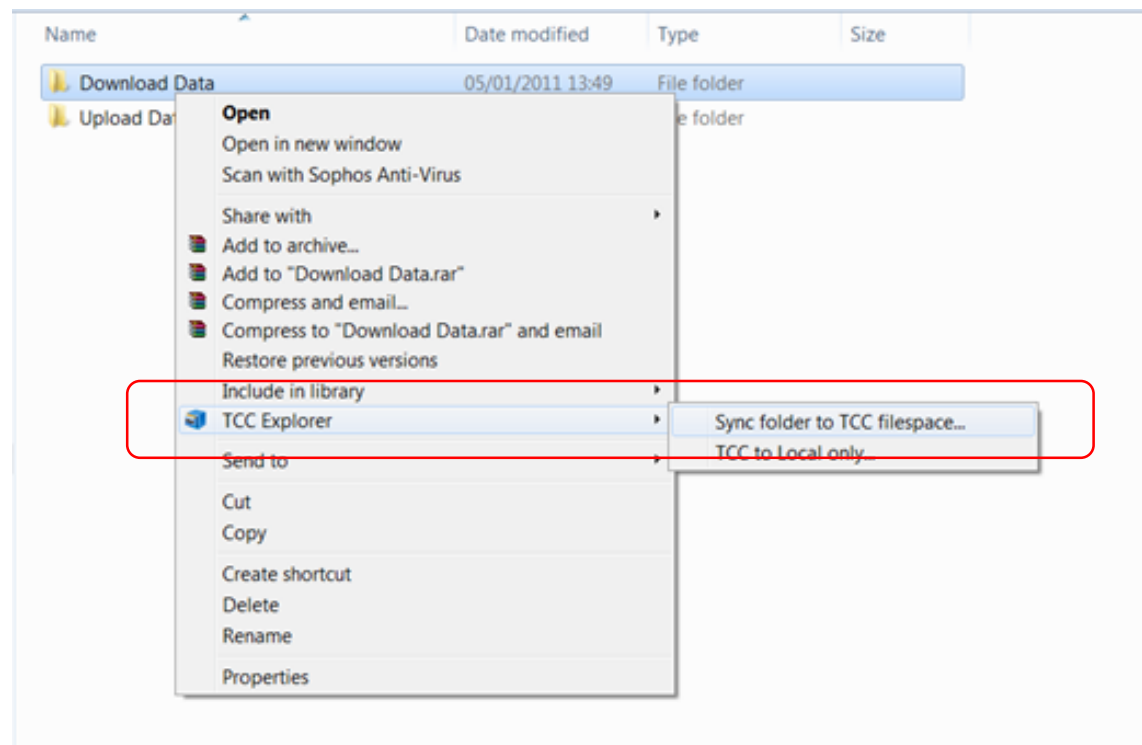


# Bruk 'TCC Explorer'

- Den tredje muligheten kan være å bruke TCC utforsker
- TCC utforsker lar deg 'speile' den valgte mappen på TCC til din PC/Server
- Så i stedet for å logge inn på TCC eller TBC hver gang du vil laste opp data, kan du simpelthen jobbe på PC'n. Hver endring i pc-mappen blir så 'speilet' til TCC (og hver endring i felt, blir speilet inn til pc'n via TCC)

# Bruk TCC Explorer

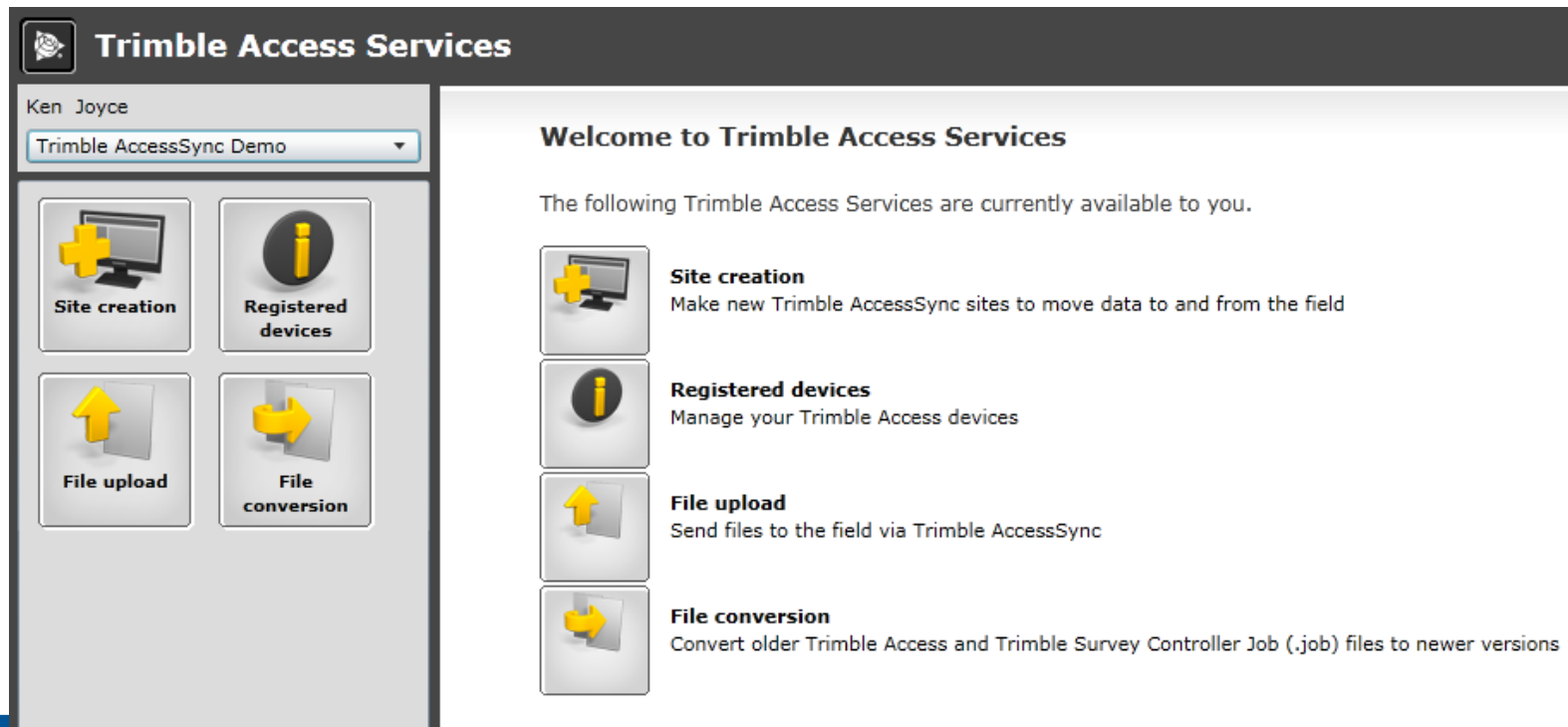
Høyreklikk på mappen, og du vil få opp en TCC Explorer meny



# **Trimble Access Services**

# TBC Services - tjenester

- Lag TCC Sites
- Oversikt over Trimble Access enheter
- Send filer til Felt
- Konvertér jobbfiler til nyere versjoner



The screenshot shows the 'Trimble Access Services' web interface. On the left, a sidebar contains a user profile for 'Ken Joyce' and a dropdown menu set to 'Trimble AccessSync Demo'. Below this are four large buttons: 'Site creation' (with a plus icon and computer monitor), 'Registered devices' (with an information icon), 'File upload' (with an upward arrow icon), and 'File conversion' (with a rightward arrow icon). The main content area is titled 'Welcome to Trimble Access Services' and lists the available services with their respective icons and descriptions:

- Site creation**: Make new Trimble AccessSync sites to move data to and from the field
- Registered devices**: Manage your Trimble Access devices
- File upload**: Send files to the field via Trimble AccessSync
- File conversion**: Convert older Trimble Access and Trimble Survey Controller Job (.job) files to newer versions

# Skap nye 'Site's

## Trimble Access Services

Ken Joyce

Trimble AccessSync Demo

- Site creation**
- Registered devices
- File upload
- File conversion

### Enter project parameters

This will create a new site to store your Trimble Access project data on. Only sites created with this tool will be available on your field controller.

Title:

Shortname:

Description:

# Registrerte enheter

Trimble Access Services

Ken Joyce

Trimble AccessSync Demo

Site creation

Registered devices

File upload

File conversion

## Controller Information

Search serial number:

Sort by: Expiration Date

Filter: Show All

Controller List by Serial Number:

- ▶ Trimble Survey Sales - AM
  - ▶ [SS31C04080](#)
  - ▶ [SS21A12520](#)
  - ▶ [SS24A15731](#)
    - Last Login: Friday, September 03, 2010 9:59:18 PM
    - Member ID: Chad McFadden
    - Project: Trimble AccessSync Demo
- ▶ Applications
 

Application Name	License Type	Activation Date	Expiration Date	Installed Version	Latest Version
AccessSync v1.0	Timed	6/28/2010	7/3/2011	1.26.093	1.26.093
Construction Instruments	Timed	6/28/2010	7/3/2011	N/A	N/A
General Survey v1.0	Full	7/1/2010	Perpetual	1.20.070	<a href="#">1.31.001</a>
GNSS Forecast v1.0	Timed	6/28/2010	7/3/2011	1.11.093	1.11.093
Mines v1.0	Timed	6/28/2010	7/3/2011	1.30.079	<a href="#">1.31.001</a>
Monitoring v1.0	Timed	6/28/2010	7/3/2011	1.10.076	1.10.076
Roads v1.0	Timed	6/28/2010	7/3/2011	1.30.079	<a href="#">1.31.001</a>
Settings v1.0	Full	7/1/2010	Perpetual	1.20.070	<a href="#">1.31.001</a>
Tunnels v1.0	Timed	6/28/2010	7/3/2011	1.30.079	<a href="#">1.31.001</a>

Registered Devices © 2010 Version 1.1.0.6

# Last opp filer

**Trimble Access Services**

Ken Joyce  
Trimble AccessSync Demo

**Site creation**   **Registered devices**

**File upload**   **File conversion**

**Select Files to Send**

Select the files to upload to your Trimble Connected Community site. These files will be picked up by AccessSync and sent to the field.

File names:  
108westmint.job

Select Files...   Remove   Next

**Trimble**. Send Files via AccessSync © 2010 Version 1.1.0.6

## Select AccessSync Users

Select the AccessSync users you want to send the files to in the field.

User names:

- All Users
- Ken Joyce

Previous

Next

# Konvertér filer

Trimble Access Services

Ken Joyce  
 GIS in the Rockies 2009

Site creation

Registered devices

File upload

File conversion

### Select Files to Convert

When selecting multiple files, each file will be checked to determine the version to convert from.

File names:

108westmint.job

Select files...
Remove
Next

Converting from Trimble Survey Controller v12.00

File Conversion © 2010 Version 1.1.0.6

## Converting Trimble Survey Controller v12.00 Files

Please select the version that you would like to convert the files to.

- Trimble Survey Controller v12.10
- Trimble Survey Controller v12.20
- Trimble Survey Controller v12.22
- Trimble Survey Controller v12.40
- Trimble Survey Controller v12.43
- Trimble Survey Controller v12.45
- Trimble Survey Controller v12.46
- Trimble Access General Survey v1.00
- Trimble Access General Survey v1.10
- Trimble Access General Survey v1.20
- Trimble Access General Survey v1.30

Previous
Next



**Spørsmål?**